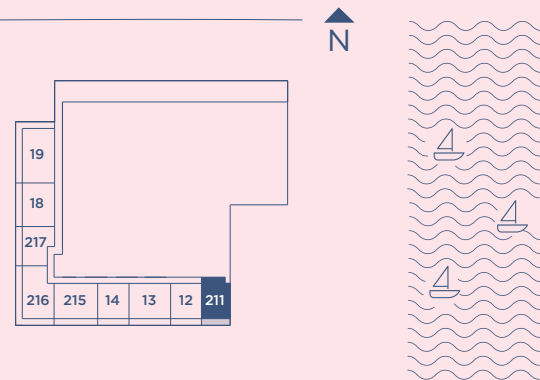


RESIDENCE
211
LEVEL 2

1 Bedroom
1.5 Bathrooms
Den

INTERIOR: 1088 SQ. FT. 101 SQ. M.
BALCONY: 287 SQ. FT. 27 SQ. M.
TOTAL : 1375 SQ. FT. 128 SQ. M.

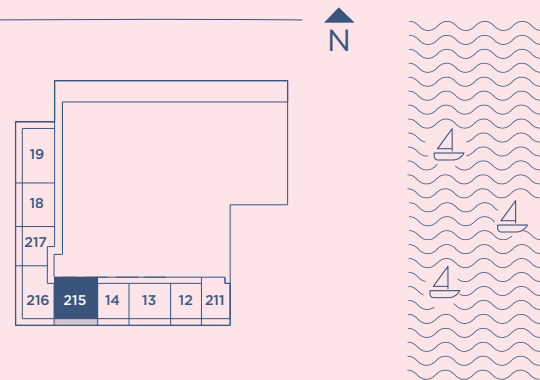


This method is generally used in sales materials and is provided to allow a prospective buyer to compare the Units with units in other condominium projects that utilize the same method. Measurements of rooms set forth on this floor plan are generally taken at the farthest points of each given room (as if the room were a perfect rectangle), without regard for any cutouts or variations. Accordingly, the area of the actual room will typically be smaller than the product obtained by multiplying the stated length and width. All dimensions are estimates which will vary with actual construction, and all floor plans, specifications and other development plans are subject to change and will not necessarily accurately reflect the final plans and specifications for the development.

RESIDENCE
215
 LEVEL 2

2 Bedroom
2.5 Bathrooms

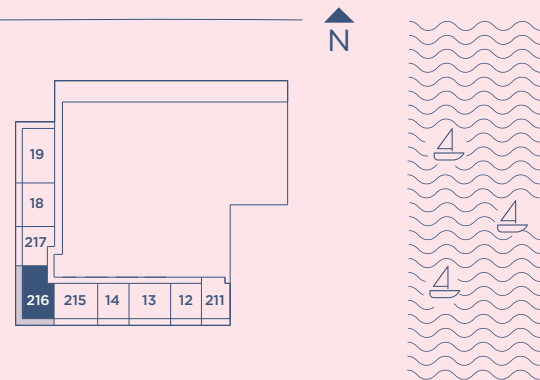
INTERIOR: 1174 SQ. FT. 109 SQ. M.
 BALCONY: 234 SQ. FT. 22 SQ. M.
 TOTAL : 1408 SQ. FT. 131 SQ. M.



RESIDENCE
216
 LEVEL 2

2 Bedroom
2 Bathrooms

INTERIOR: 1247 SQ. FT. 116 SQ. M.
 BALCONY: 483 SQ. FT. 45 SQ. M.
 TOTAL : 1730 SQ. FT. 161 SQ. M.



This method is generally used in sales materials and is provided to allow a prospective buyer to compare the Units with units in other condominium projects that utilize the same method. Measurements of rooms set forth on this floor plan are generally taken at the farthest points of each given room (as if the room were a perfect rectangle), without regard for any cutouts or variations. Accordingly, the area of the actual room will typically be smaller than the product obtained by multiplying the stated length and width. All dimensions are estimates which will vary with actual construction, and all floor plans, specifications and other development plans are subject to change and will not necessarily accurately reflect the final plans and specifications for the development.



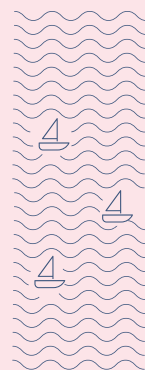
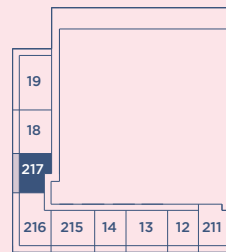
Mr.C
RESIDENCES
WEST PALM BEACH, FL

BY
IGNAZIO
AND
MAGGIO
CIPRIANI

RESIDENCE
217
LEVEL 2

1 Bedroom
1.5 Bathrooms

INTERIOR: 920 SQ. FT. 85 SQ. M.
BALCONY: 258 SQ. FT. 24 SQ. M.
TOTAL : 1178 SQ. FT. 109 SQ. M.

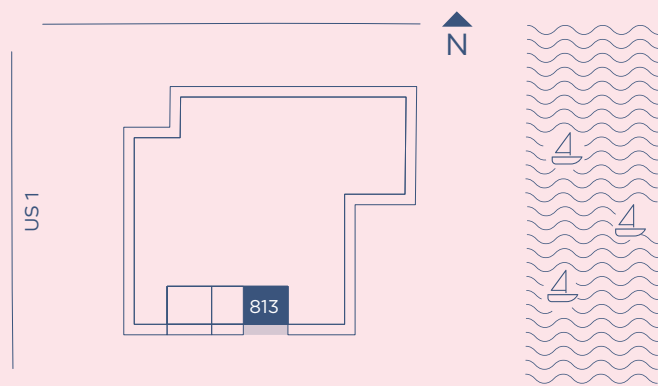


This method is generally used in sales materials and is provided to allow a prospective buyer to compare the Units with units in other condominium projects that utilize the same method. Measurements of rooms set forth on this floor plan are generally taken at the farthest points of each given room (as if the room were a perfect rectangle), without regard for any cutouts or variations. Accordingly, the area of the actual room will typically be smaller than the product obtained by multiplying the stated length and width. All dimensions are estimates which will vary with actual construction, and all floor plans, specifications and other development plans are subject to change and will not necessarily accurately reflect the final plans and specifications for the development.

RESIDENCE
813
 LEVEL 8

2 Bedroom
2.5 Bathrooms

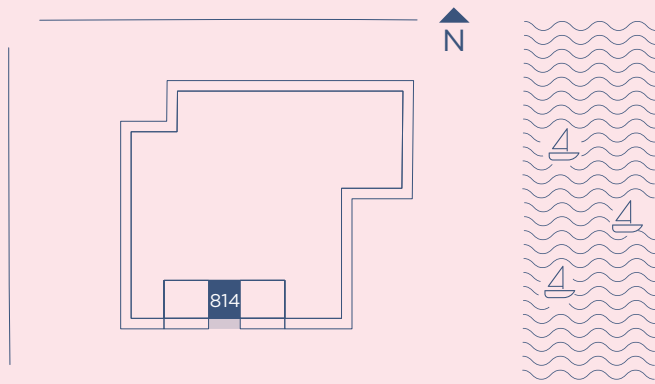
INTERIOR: 1200 SQ. FT. 111SQ. M.
 BALCONY: 202 SQ. FT. 19 SQ. M.
 TOTAL : 1402 SQ. FT. 130 SQ. M.



RESIDENCE
814
LEVEL 8

1 Bedroom
1.5 Bathrooms

INTERIOR: 830 SQ. FT. 77 SQ. M.
BALCONY: 137 SQ. FT. 13 SQ. M.
TOTAL : 967 SQ. FT. 90 SQ. M.

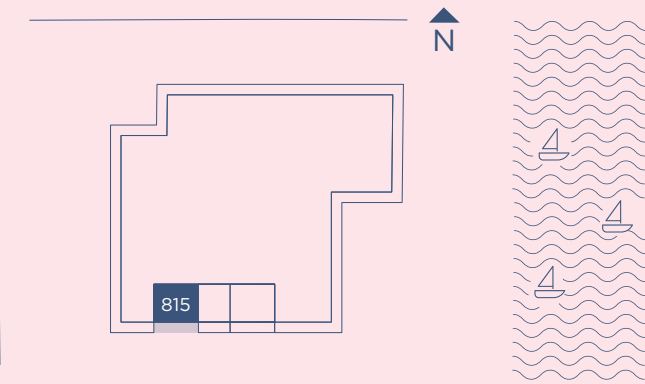
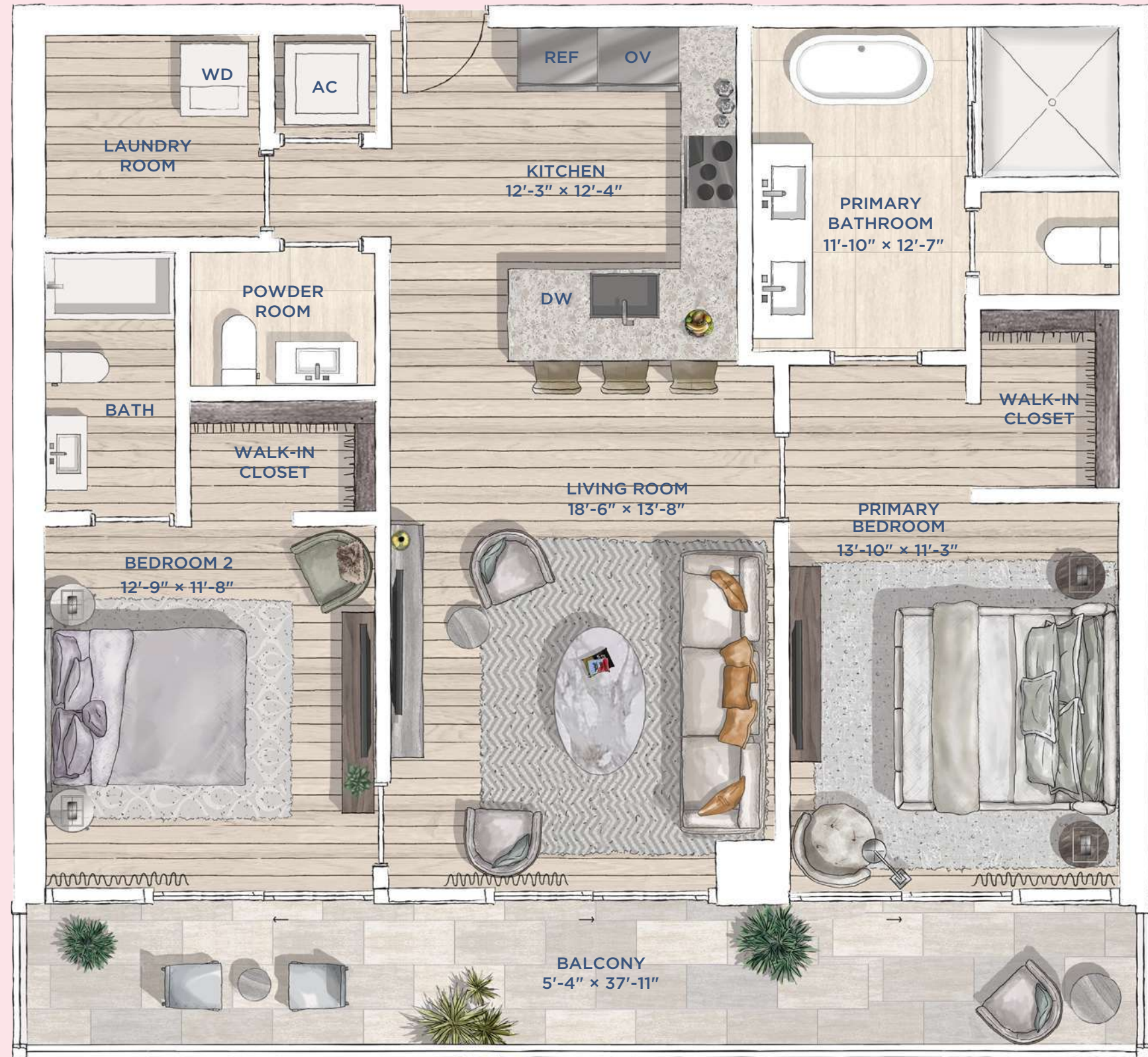


This method is generally used in sales materials and is provided to allow a prospective buyer to compare the Units with units in other condominium projects that utilize the same method. Measurements of rooms set forth on this floor plan are generally taken at the farthest points of each given room (as if the room were a perfect rectangle), without regard for any cutouts or variations. Accordingly, the area of the actual room will typically be smaller than the product obtained by multiplying the stated length and width. All dimensions are estimates which will vary with actual construction, and all floor plans, specifications and other development plans are subject to change and will not necessarily accurately reflect the final plans and specifications for the development.

RESIDENCE
815
LEVEL 8

**2 Bedroom
2.5 Bathrooms**

INTERIOR: 1213 SQ. FT. 113 SQ. M.
BALCONY: 202 SQ. FT. 19 SQ. M.
TOTAL : 1415 SQ. FT. 131 SQ. M.

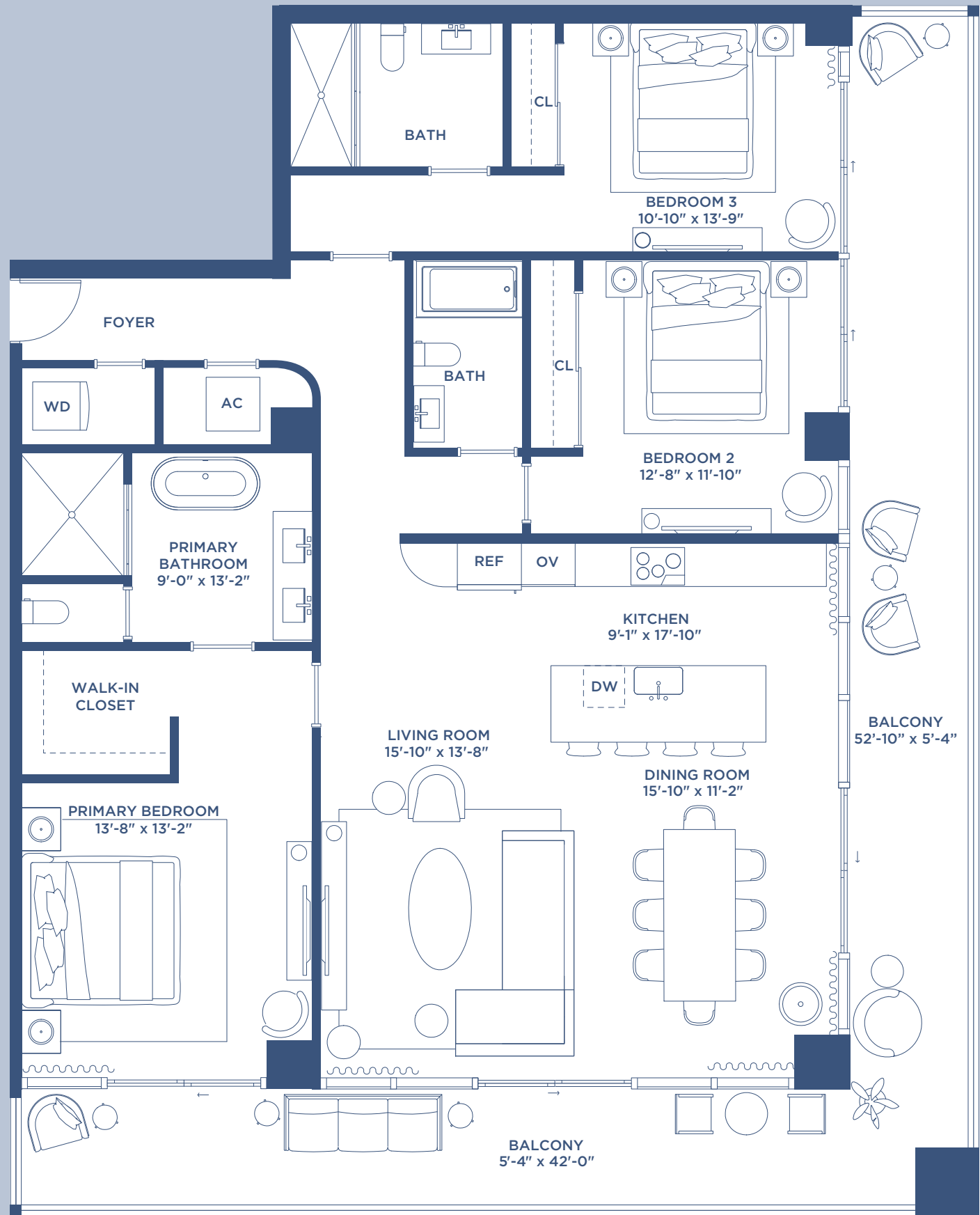
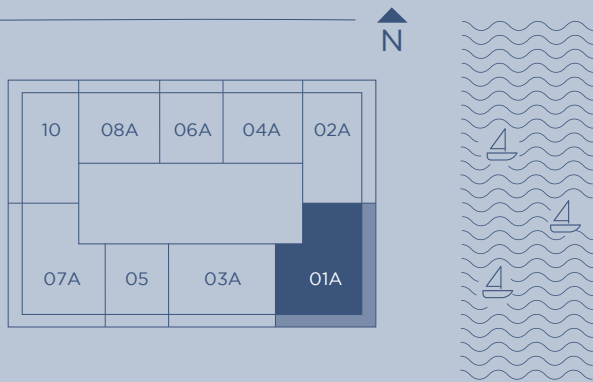


RESIDENCE
01A

LEVEL 9-15

3 Bedrooms
3 Bathrooms

INTERIOR: 1817 SQ. FT. 169 SQ. M.
BALCONY: 562 SQ. FT. 52SQ. M.
TOTAL: 2379 SQ. FT. 221 SQ. M.



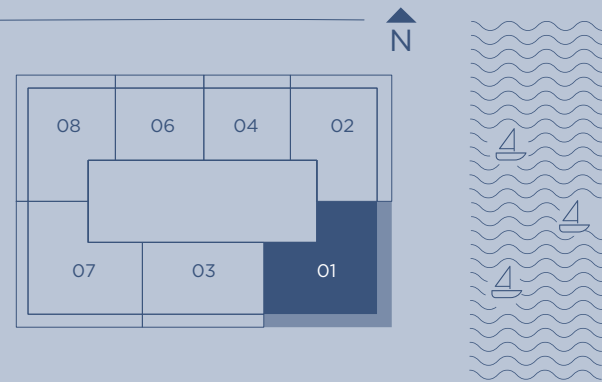
RESIDENCE

01

LEVEL 16-20

3 Bedrooms
3.5 Bathrooms

INTERIOR: 2195 SQ. FT. 204 SQ. M.
BALCONY: 638 SQ. FT. 59 SQ. M.
TOTAL: 2833 SQ. FT. 263 SQ. M.

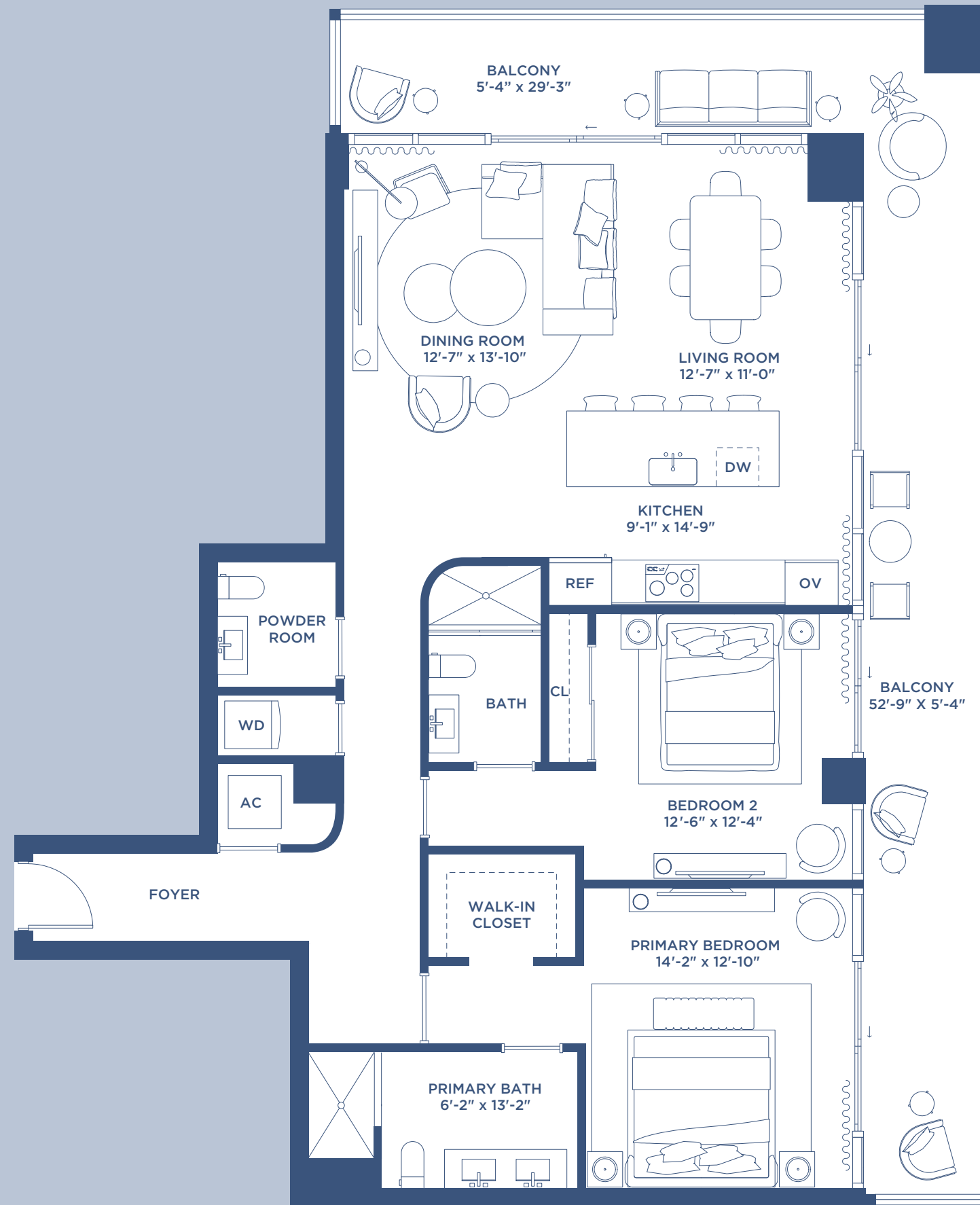
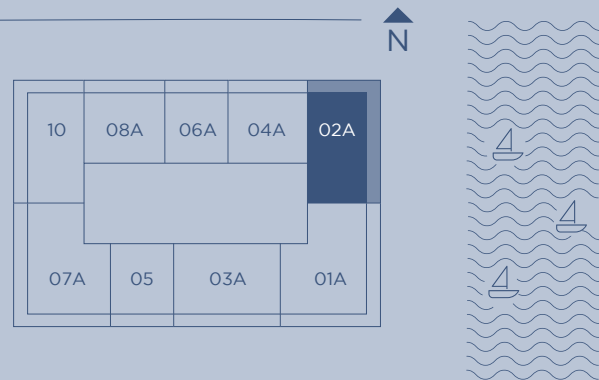


RESIDENCE
02A

LEVEL 9-15

2 Bedrooms
2.5 Bathrooms

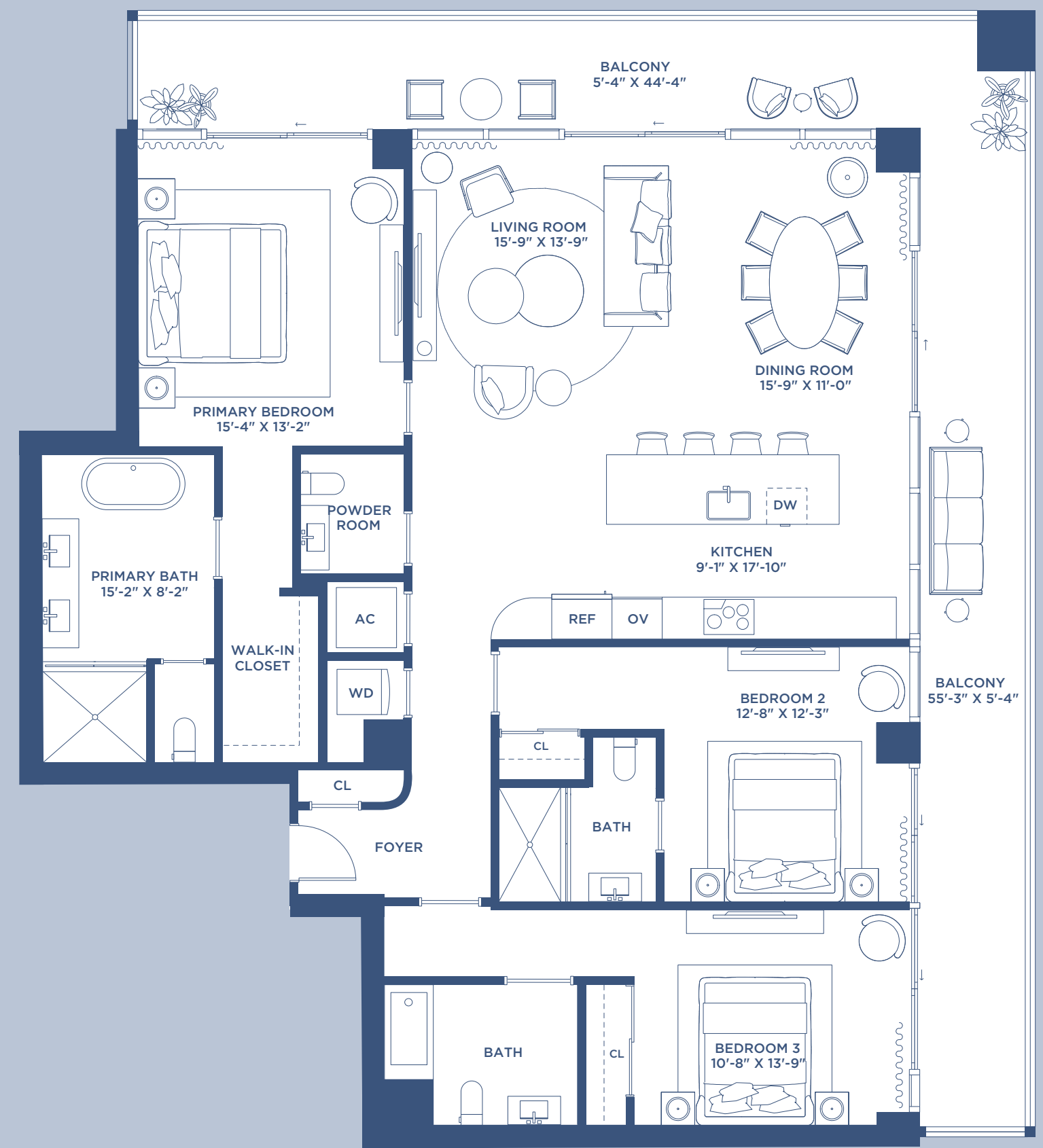
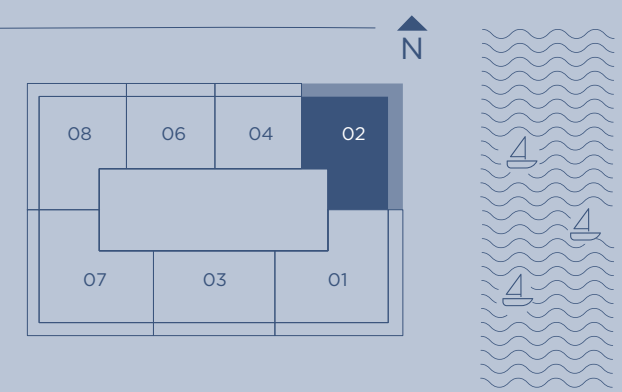
INTERIOR: 1397 SQ. FT. 130 SQ. M.
BALCONY: 486 SQ. FT. 45 SQ. M.
TOTAL: 1883 SQ. FT. 175 SQ. M.



RESIDENCE
02
LEVEL 16-20

3 Bedrooms
3.5 Bathrooms

INTERIOR: 1836 SQ. FT. 171 SQ. M.
BALCONY: 562 SQ. FT. 52 SQ. M.
TOTAL: 2398 SQ. FT. 223 SQ. M.



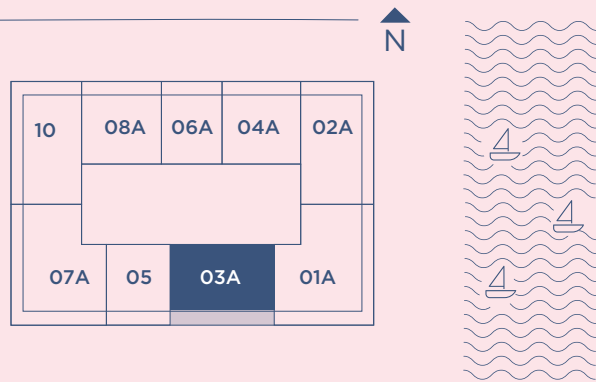
Stated square footages and dimensions are measured to the exterior boundaries of the exterior walls and the centerline of interior demising walls and in fact vary from the square footage and dimensions that would be determined by using the description and definition of the "Unit" set forth in the Declaration (which generally only includes the interior airspace between the perimeter walls and excludes all interior structural components and other common elements). This method is generally used in sales materials and is provided to allow a prospective buyer to compare the Units with units in other condominium projects that utilize the same method. Measurements of rooms set forth on this floor plan are generally taken at the farthest points of each given room (as if the room were a perfect rectangle), without regard for any cutouts or variations. Accordingly, the area of the actual room will typically be smaller than the product obtained by multiplying the stated length and width. All dimensions are estimates which will vary with actual construction, and all floor plans, specifications and other development plans are subject to change and will not necessarily accurately reflect the final plans and specifications for the development.

RESIDENCE
03A

LEVEL 9-15

2 Bedrooms
2.5 Bathrooms

INTERIOR: 1630 SQ. FT. 151 SQ. M.
BALCONY: 310 SQ. FT. 29 SQ. M.
TOTAL: 1940 SQ. FT. 180 SQ. M.

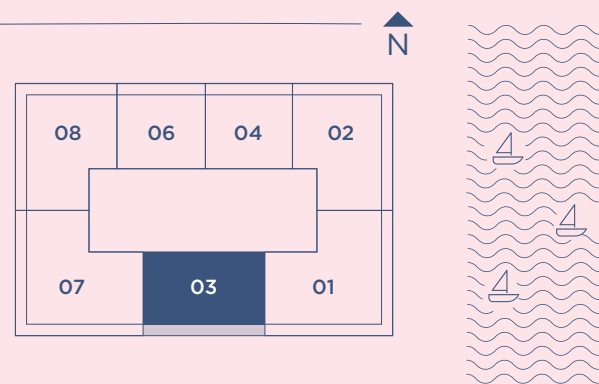


Stated square footages and dimensions are measured to the exterior boundaries of the exterior walls and the centerline of interior demising walls and in fact vary from the square footage and dimensions that would be determined by using the description and definition of the "Unit" set forth in the Declaration (which generally only includes the interior airspace between the perimeter walls and excludes all interior structural components and other common elements). This method is generally used in sales materials and is provided to allow a prospective buyer to compare the Units with units in other condominium projects that utilize the same method. Measurements of rooms set forth on this floor plan are generally taken at the farthest points of each given room (as if the room were a perfect rectangle), without regard for any cutouts or variations. Accordingly, the area of the actual room will typically be smaller than the product obtained by multiplying the stated length and width. All dimensions are estimates which will vary with actual construction, and all floor plans, specifications and other development plans are subject to change and will not necessarily accurately reflect the final plans and specifications for the development.

RESIDENCE
03
 LEVEL 16-20

2 Bedrooms
2.5 Bathrooms

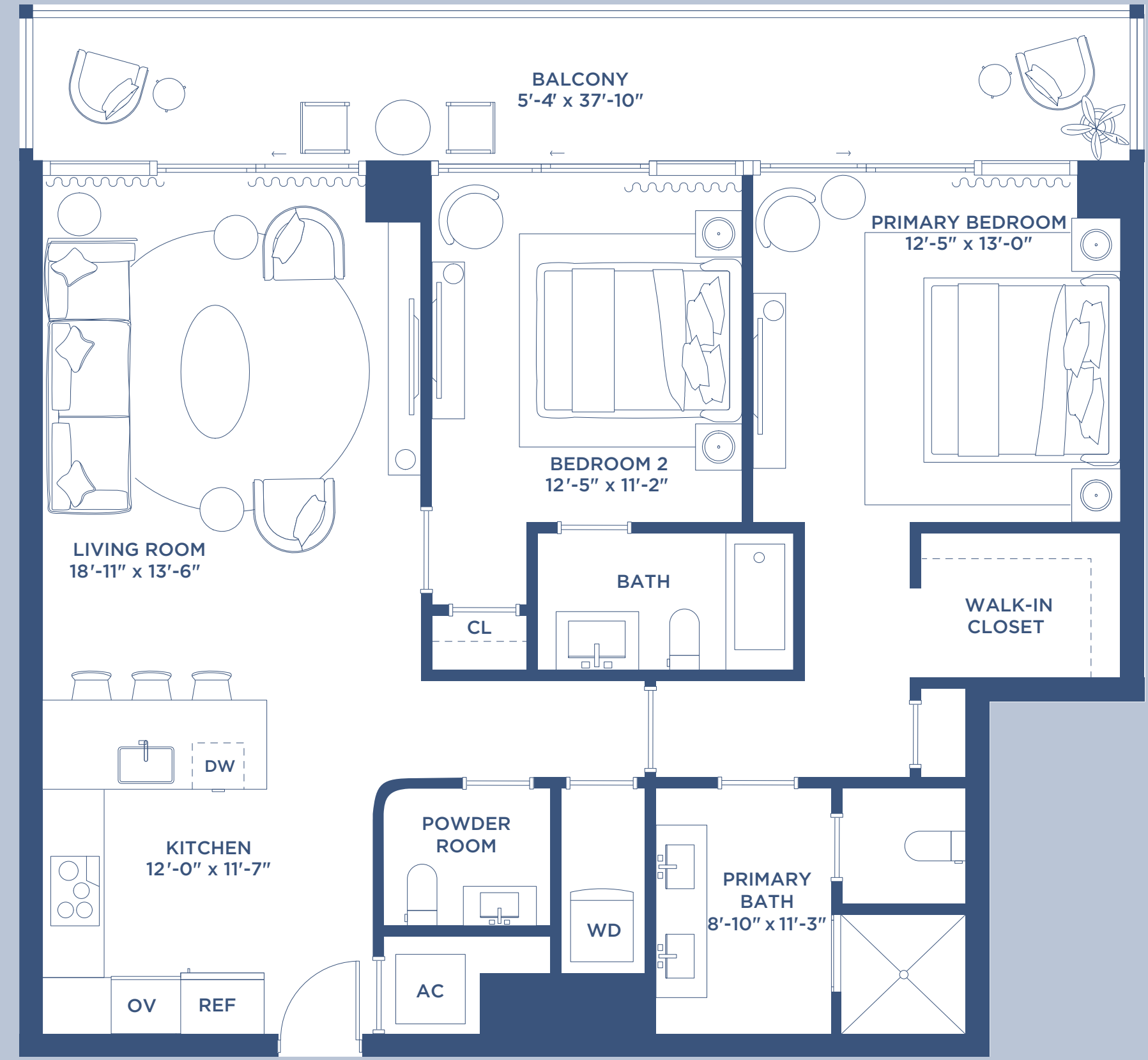
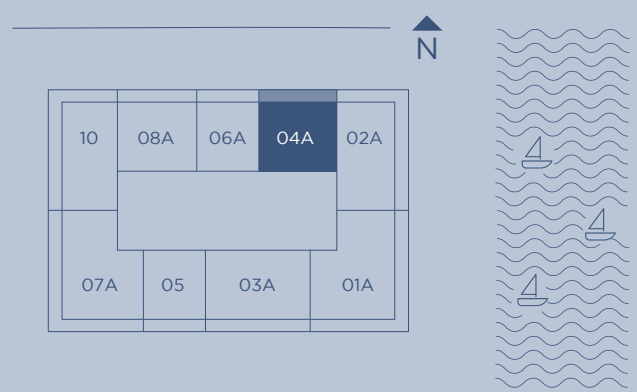
INTERIOR: 1698 SQ.FT. 158 SQ. M.
 BALCONY: 312 SQ.FT. 29 SQ. M.
 TOTAL: 2010 SQ. FT. 187 SQ. M.



RESIDENCE
04A
LEVEL 9-15

2 Bedrooms
2.5 Bathrooms

INTERIOR: 1170 SQ. FT. 109 SQ. M.
BALCONY: 230 SQ. FT. 21 SQ. M.
TOTAL: 1400 SQ. FT. 130 SQ. M.



Stated square footages and dimensions are measured to the exterior boundaries of the exterior walls and the centerline of interior demising walls and in fact vary from the square footage and dimensions that would be determined by using the description and definition of the "Unit" set forth in the Declaration (which generally only includes the interior airspace between the perimeter walls and excludes all interior structural components and other common elements). This method is generally used in sales materials and is provided to allow a prospective buyer to compare the Units with units in other condominium projects that utilize the same method. Measurements of rooms set forth on this floor plan are generally taken at the farthest points of each given room (as if the room were a perfect rectangle), without regard for any cutouts or variations. Accordingly, the area of the actual room will typically be smaller than the product obtained by multiplying the stated length and width. All dimensions are estimates which will vary with actual construction, and all floor plans, specifications and other development plans are subject to change and will not necessarily accurately reflect the final plans and specifications for the development.



Mr.C
RESIDENCES
WEST PALM BEACH, FL

BY
IGNAZIO
AND
MAGGIO
CIPRIANI

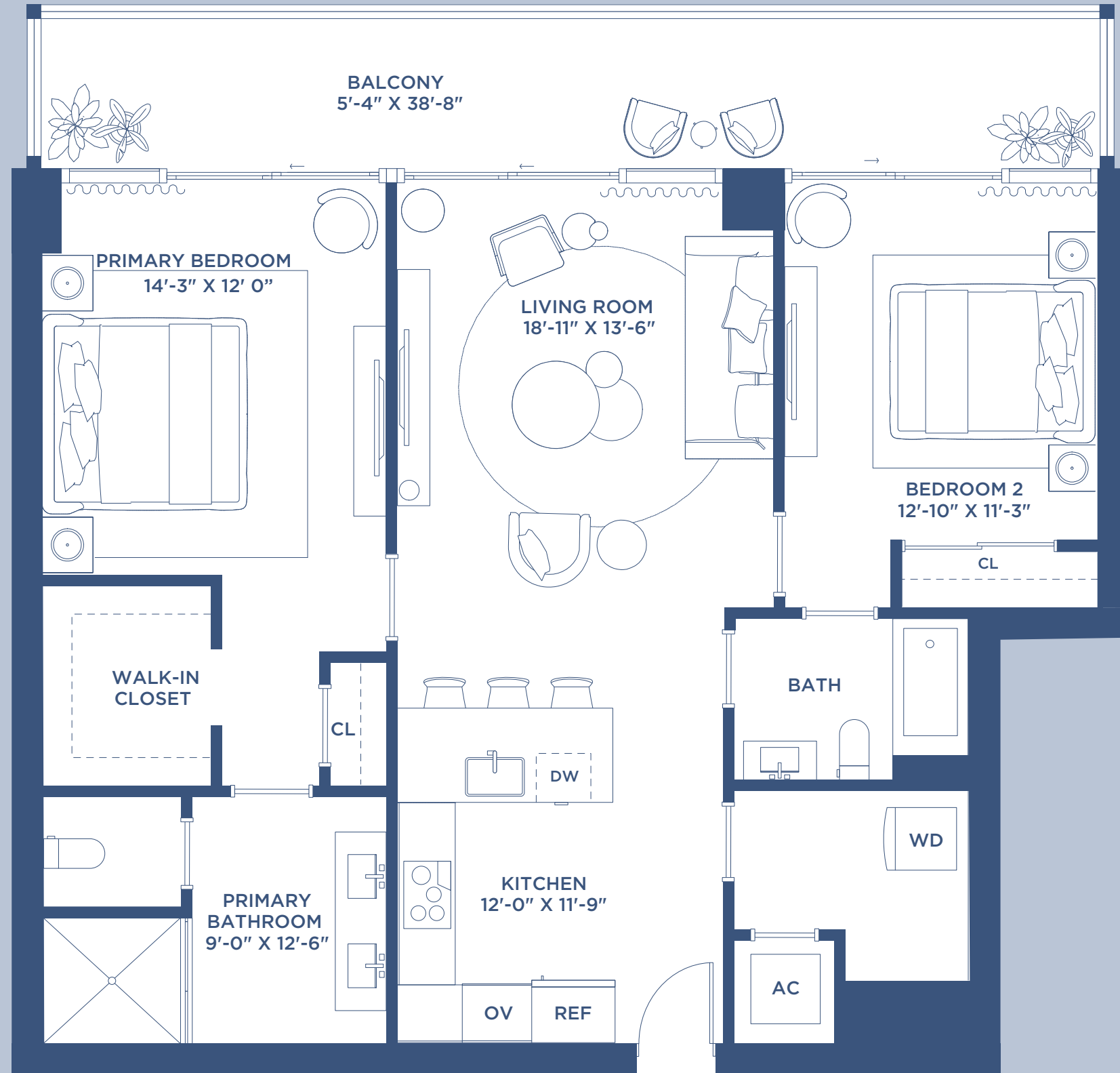
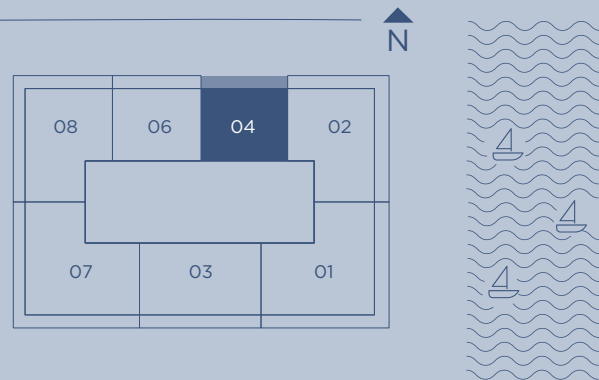
RESIDENCE

04

LEVEL 16-20

2 Bedrooms
2 Bathrooms

INTERIOR: 1149 SQ. FT. 107 SQ. M.
BALCONY: 232 SQ. FT. 22 SQ. M.
TOTAL: 1381 SQ. FT. 29 SQ. M.



Stated square footages and dimensions are measured to the exterior boundaries of the exterior walls and the centerline of interior demising walls and in fact vary from the square footage and dimensions that would be determined by using the description and definition of the "Unit" set forth in the Declaration (which generally only includes the interior airspace between the perimeter walls and excludes all interior structural components and other common elements). This method is generally used in sales materials and is provided to allow a prospective buyer to compare the Units with units in other condominium projects that utilize the same method. Measurements of rooms set forth on this floor plan are generally taken at the farthest points of each given room (as if the room were a perfect rectangle), without regard for any cutouts or variations. Accordingly, the area of the actual room will typically be smaller than the product obtained by multiplying the stated length and width. All dimensions are estimates which will vary with actual construction, and all floor plans, specifications and other development plans are subject to change and will not necessarily accurately reflect the final plans and specifications for the development.



Mr.C
RESIDENCES
WEST PALM BEACH, FL

BY
IGNAZIO
AND
MAGGIO
CIPRIANI

RESIDENCE

05

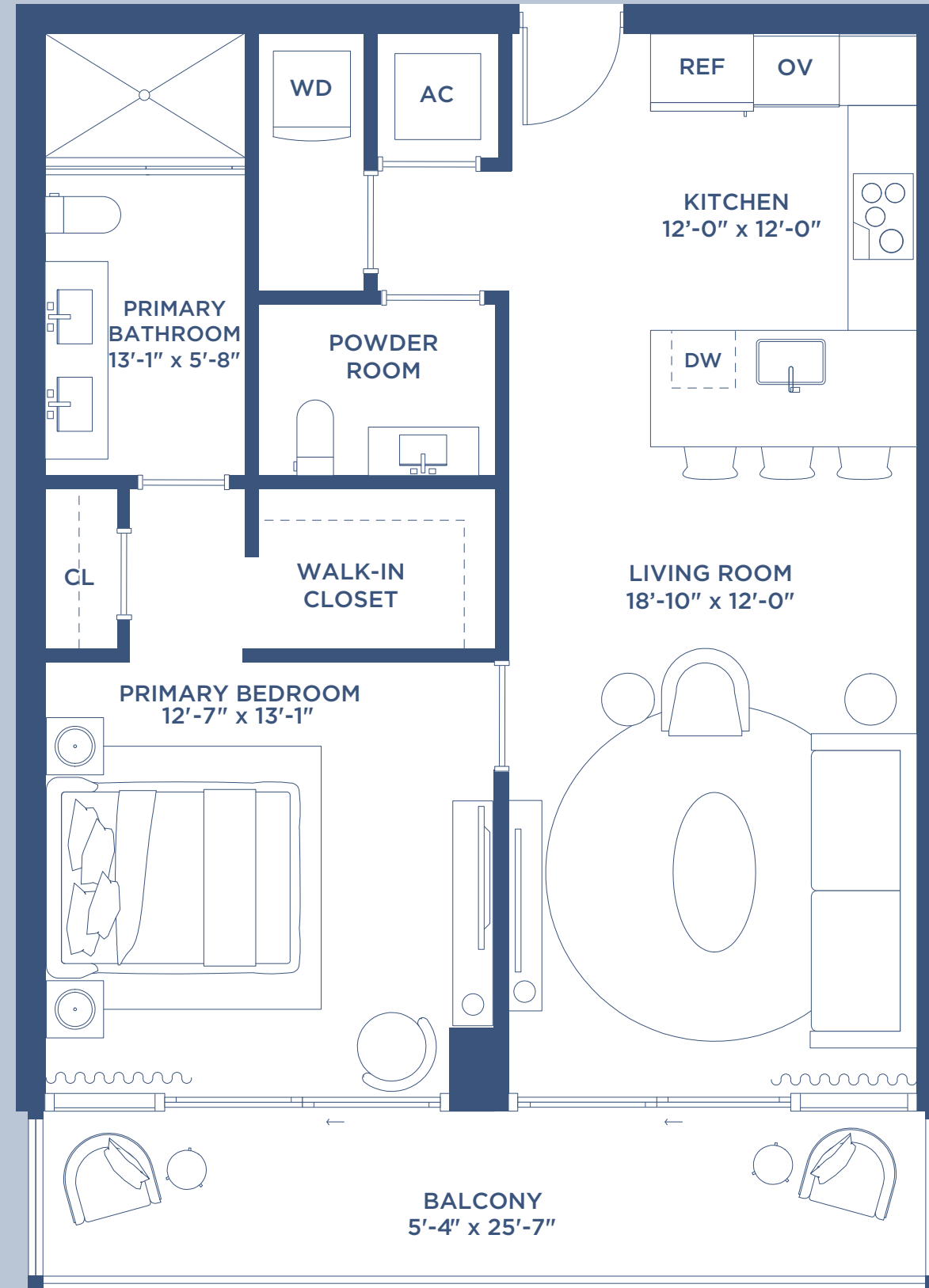
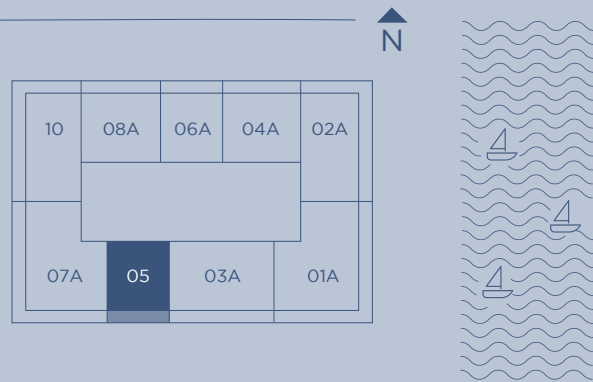
LEVEL 9-15

1 Bedroom
1.5 Bathrooms

INTERIOR: 832 SQ. FT. 77 SQ. M.

BALCONY: 157 SQ. FT. 15 SQ. M.

TOTAL: 989 SQ. FT. 92 SQ. M.



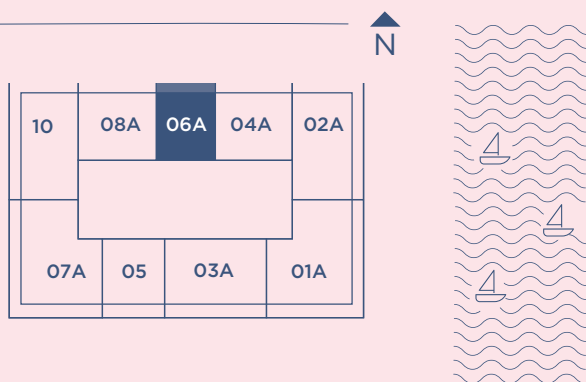
Stated square footages and dimensions are measured to the exterior boundaries of the exterior walls and the centerline of interior demising walls and in fact vary from the square footage and dimensions that would be determined by using the description and definition of the "Unit" set forth in the Declaration (which generally only includes the interior airspace between the perimeter walls and excludes all interior structural components and other common elements). This method is generally used in sales materials and is provided to allow a prospective buyer to compare the Units with units in other condominium projects that utilize the same method. Measurements of rooms set forth on this floor plan are generally taken at the farthest points of each given room (as if the room were a perfect rectangle), without regard for any cutouts or variations. Accordingly, the area of the actual room will typically be smaller than the product obtained by multiplying the stated length and width. All dimensions are estimates which will vary with actual construction, and all floor plans, specifications and other development plans are subject to change and will not necessarily accurately reflect the final plans and specifications for the development.

RESIDENCE
06A

LEVEL 9-15

1 Bedroom
1.5 Bathrooms

INTERIOR: 832 SQ. FT. 77 SQ. M.
BALCONY: 156 SQ. FT. 14 SQ. M.
TOTAL: 988 SQ. FT. 92 M.



RESIDENCE

06

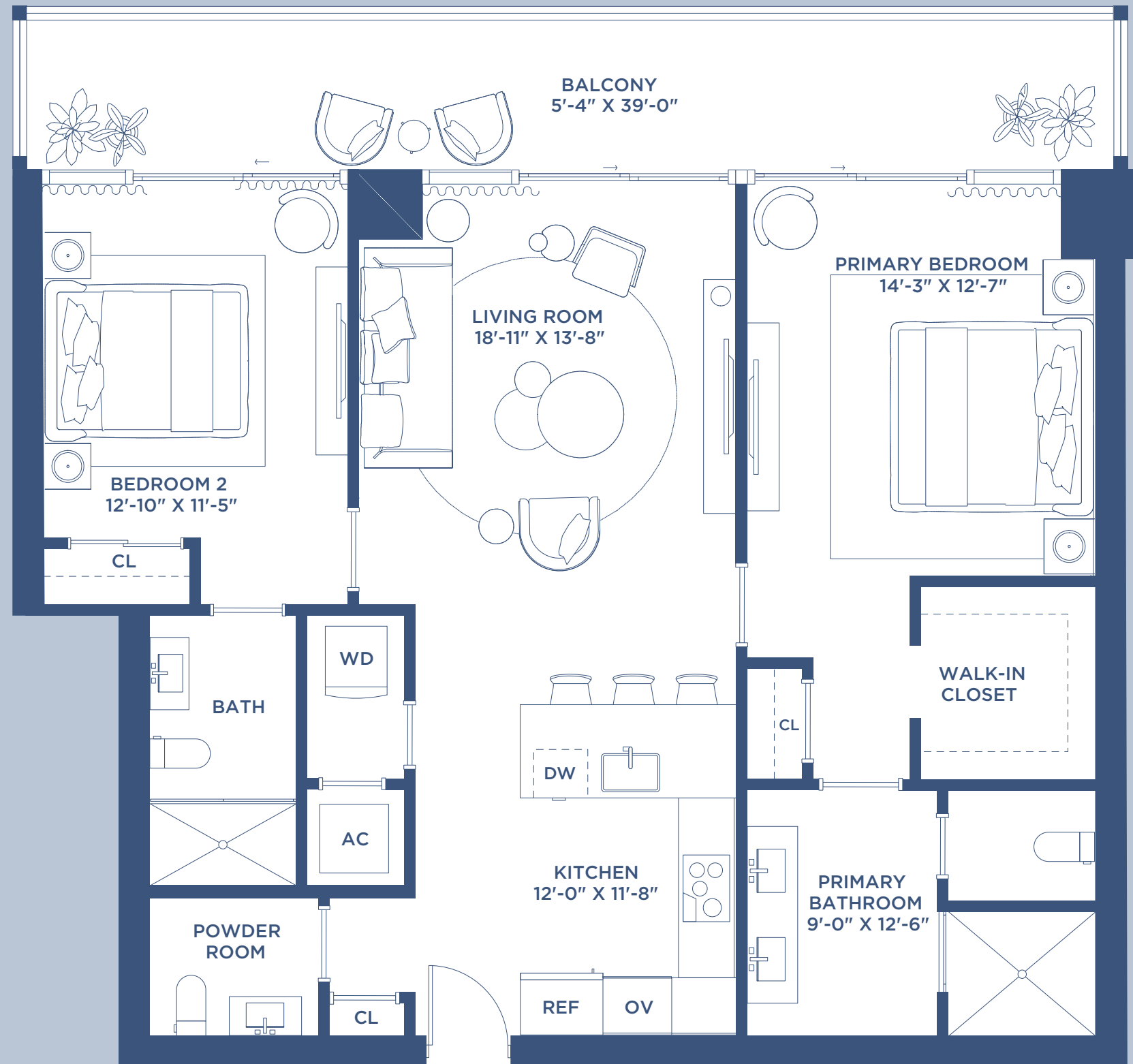
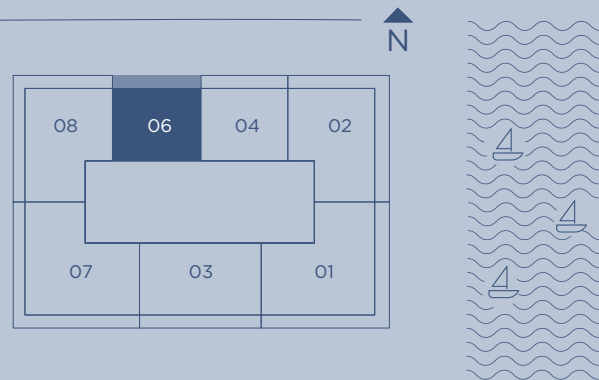
LEVEL 16-20

2 Bedrooms
2.5 Bathrooms

INTERIOR: 1178 SQ. FT. 109 SQ. M.

BALCONY: 234 SQ. FT. 22 SQ. M.

TOTAL: 1412 SQ. FT. 131 SQ. M.





Mr.C
RESIDENCES
WEST PALM BEACH, FL

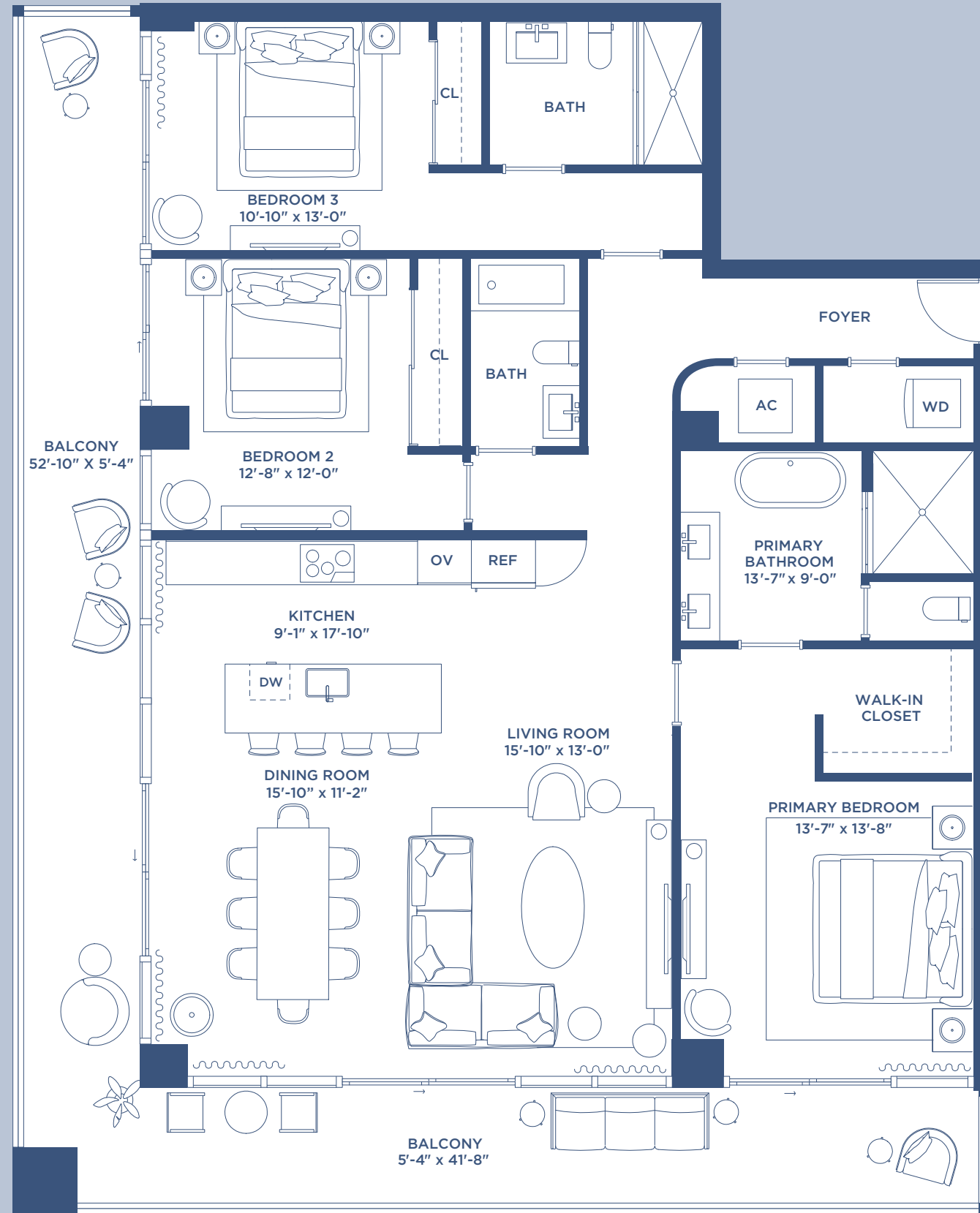
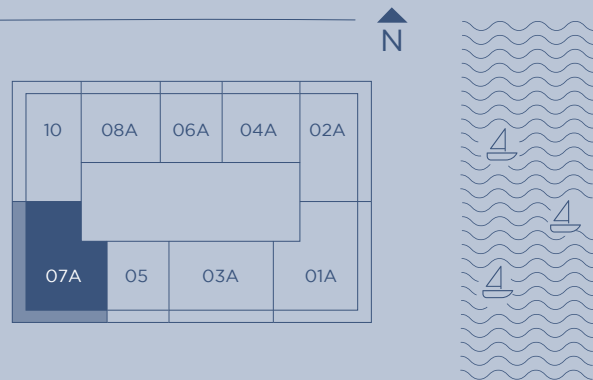
BY
IGNAZIO
AND
MAGGIO
CIPRIANI

RESIDENCE
07A

LEVEL 9-15

3 Bedrooms
3 Bathrooms

INTERIOR: 1803 SQ. FT. 168 SQ. M.
BALCONY: 560 SQ. FT. 52 SQ. M.
TOTAL: 2363 SQ. FT. 220 SQ. M.

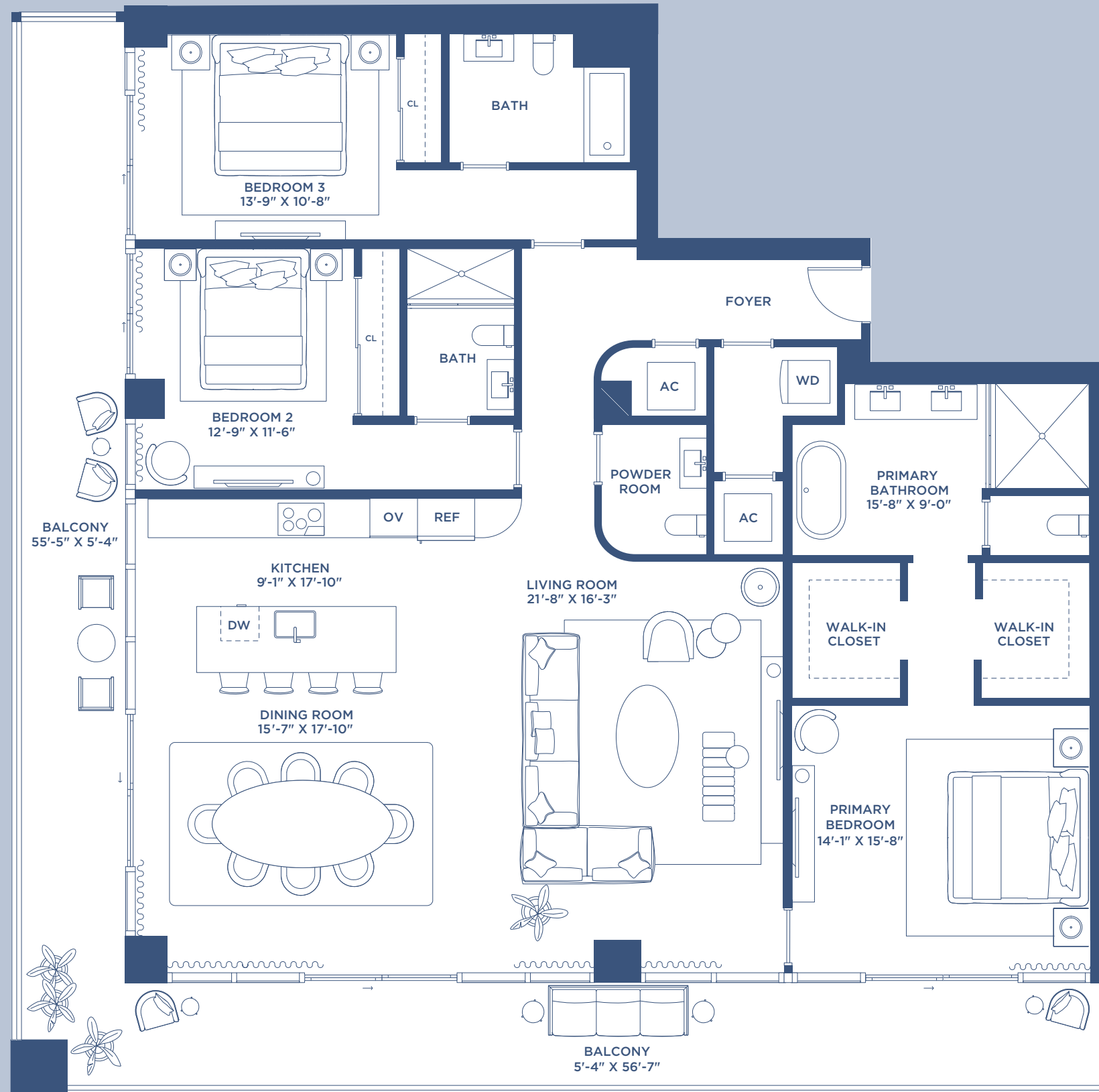
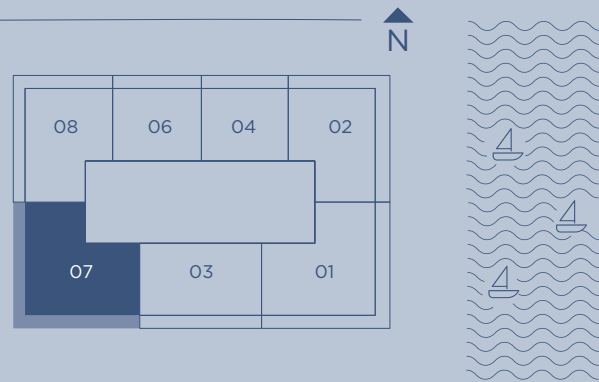


Stated square footages and dimensions are measured to the exterior boundaries of the exterior walls and the centerline of interior demising walls and in fact vary from the square footage and dimensions that would be determined by using the description and definition of the "Unit" set forth in the Declaration (which generally only includes the interior airspace between the perimeter walls and excludes all interior structural components and other common elements). This method is generally used in sales materials and is provided to allow a prospective buyer to compare the Units with units in other condominium projects that utilize the same method. Measurements of rooms set forth on this floor plan are generally taken at the farthest points of each given room (as if the room were a perfect rectangle), without regard for any cutouts or variations. Accordingly, the area of the actual room will typically be smaller than the product obtained by multiplying the stated length and width. All dimensions are estimates which will vary with actual construction, and all floor plans, specifications and other development plans are subject to change and will not necessarily accurately reflect the final plans and specifications for the development.

RESIDENCE
07
LEVEL 16-20

3 Bedrooms
3.5 Bathrooms

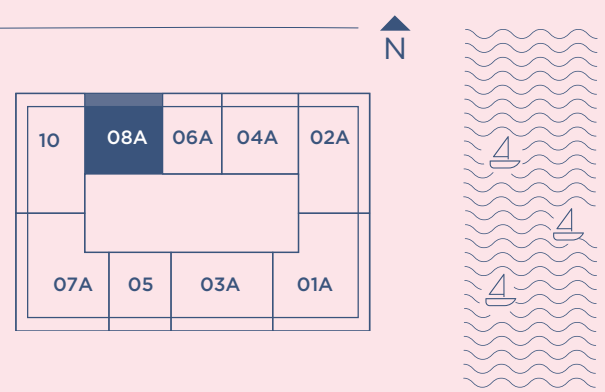
INTERIOR: 2189 SQ. FT. 203 SQ. M.
BALCONY: 638 SQ. FT. 59 SQ. M.
TOTAL: 2827 SQ. FT. 262 SQ. M.



RESIDENCE
08A
 LEVEL 9-15

2 Bedrooms
2.5 Bathrooms

INTERIOR: 1221 SQ. FT. 113 SQ. M.
 BALCONY: 234 SQ. FT. 22 SQ. M.
 TOTAL: 1455 SQ. FT. 135 SQ. M.

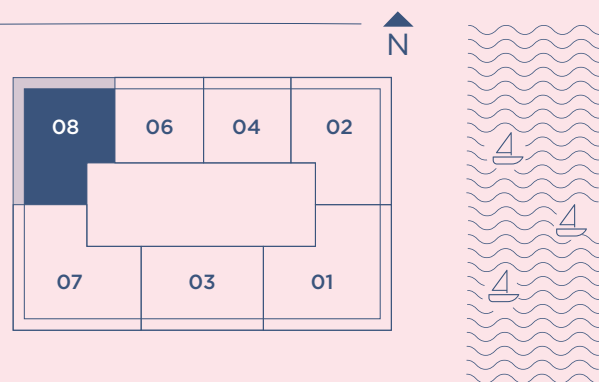


Stated square footages and dimensions are measured to the exterior boundaries of the exterior walls and the centerline of interior demising walls and in fact vary from the square footage and dimensions that would be determined by using the description and definition of the "Unit" set forth in the Declaration (which generally only includes the interior airspace between the perimeter walls and excludes all interior structural components and other common elements). This method is generally used in sales materials and is provided to allow a prospective buyer to compare the Units with units in other condominium projects that utilize the same method. Measurements of rooms set forth on this floor plan are generally taken at the farthest points of each given room (as if the room were a perfect rectangle), without regard for any cutouts or variations. Accordingly, the area of the actual room will typically be smaller than the product obtained by multiplying the stated length and width. All dimensions are estimates which will vary with actual construction, and all floor plans, specifications and other development plans are subject to change and will not necessarily accurately reflect the final plans and specifications for the development.

RESIDENCE
08
LEVEL 16-20

3 Bedrooms
3.5 Bathrooms

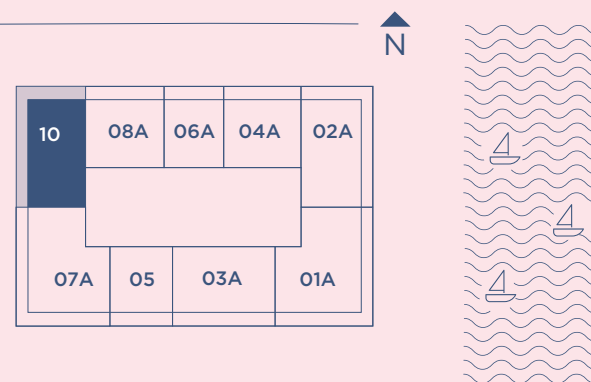
INTERIOR: 1870 SQ. FT. 174 SQ. M.
BALCONY: 560 SQ. FT. 52 SQ. M.
TOTAL: 2430 SQ. FT. 226 SQ. M.



RESIDENCE
10
LEVEL 9-15

2 Bedrooms
2.5 Bathrooms

INTERIOR: 1414 SQ. FT. 131 SQ. M.
BALCONY: 482 SQ. FT. 45 SQ. M.
TOTAL: 1896 SQ. FT. 176 SQ. M.

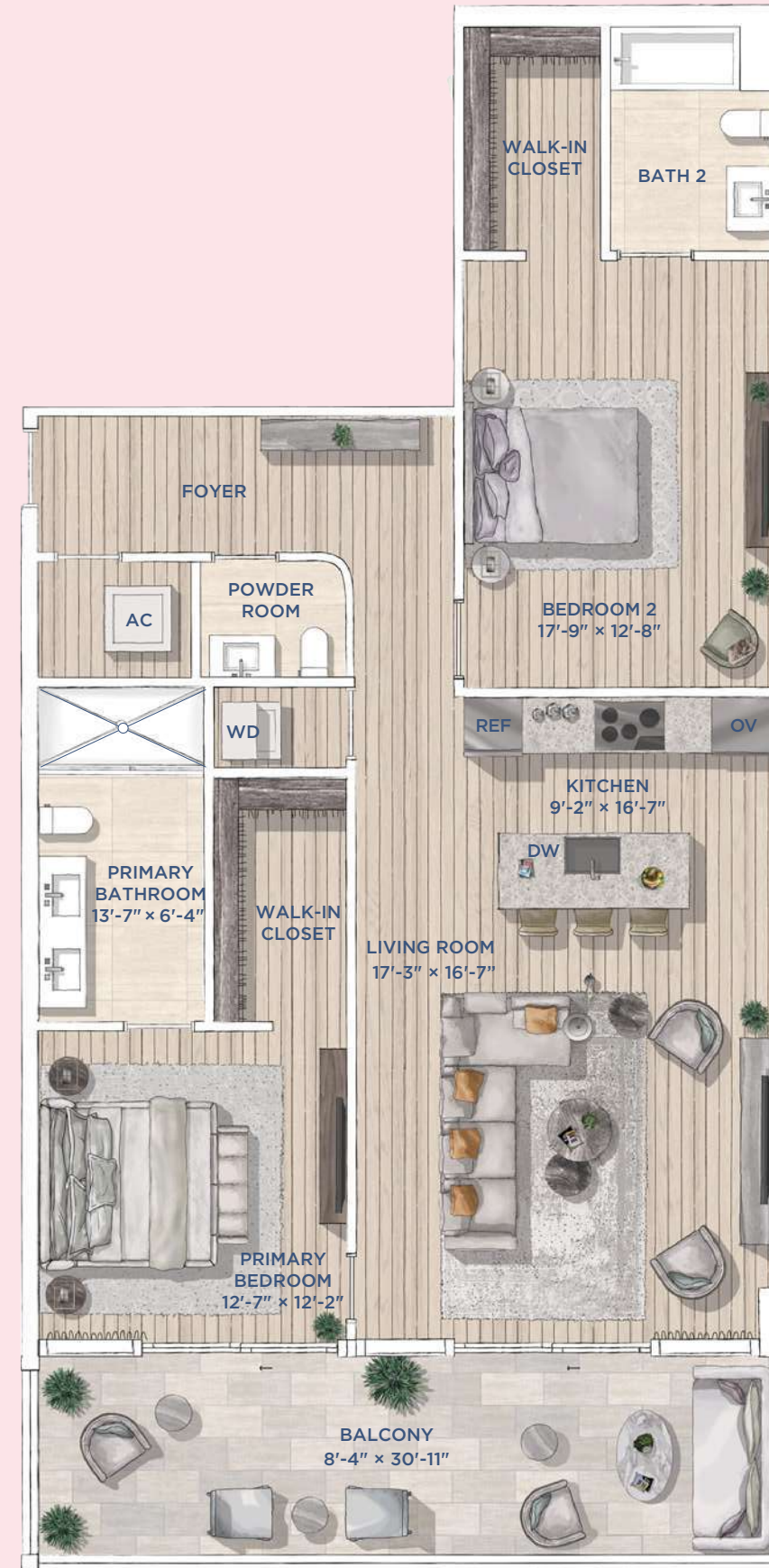
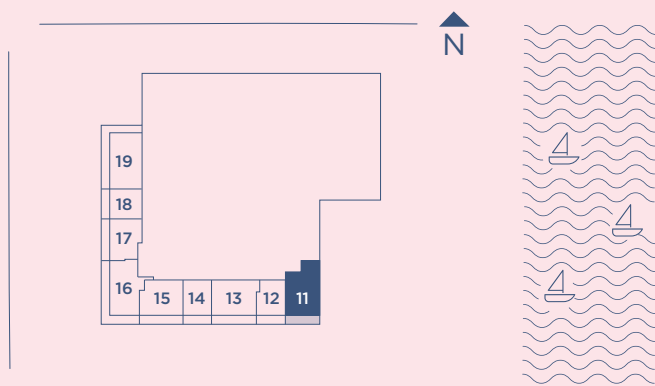


Stated square footages and dimensions are measured to the exterior boundaries of the exterior walls and the centerline of interior demising walls and in fact vary from the square footage and dimensions that would be determined by using the description and definition of the "Unit" set forth in the Declaration (which generally only includes the interior airspace between the perimeter walls and excludes all interior structural components and other common elements). This method is generally used in sales materials and is provided to allow a prospective buyer to compare the Units with units in other condominium projects that utilize the same method. Measurements of rooms set forth on this floor plan are generally taken at the farthest points of each given room (as if the room were a perfect rectangle), without regard for any cutouts or variations. Accordingly, the area of the actual room will typically be smaller than the product obtained by multiplying the stated length and width. All dimensions are estimates which will vary with actual construction, and all floor plans, specifications and other development plans are subject to change and will not necessarily accurately reflect the final plans and specifications for the development.

RESIDENCE
11
LEVEL 3-7

2 Bedrooms
2.5 Bathrooms

INTERIOR: 1383 SQ. FT. 128 SQ. M.
BALCONY: 287 SQ. FT. 27 SQ. M.
TOTAL: 1670 SQ. FT. 155 SQ. M.

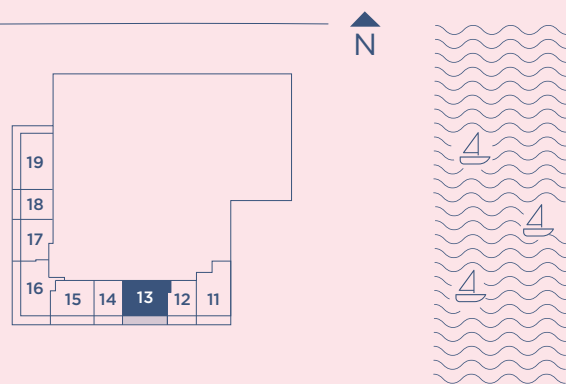


Stated square footages and dimensions are measured to the exterior boundaries of the exterior walls and the centerline of interior demising walls and in fact vary from the square footage and dimensions that would be determined by using the description and definition of the "Unit" set forth in the Declaration (which generally only includes the interior airspace between the perimeter walls and excludes all interior structural components and other common elements). This method is generally used in sales materials and is provided to allow a prospective buyer to compare the Units with units in other condominium projects that utilize the same method. Measurements of rooms set forth on this floor plan are generally taken at the farthest points of each given room (as if the room were a perfect rectangle), without regard for any cutouts or variations. Accordingly, the area of the actual room will typically be smaller than the product obtained by multiplying the stated length and width. All dimensions are estimates which will vary with actual construction, and all floor plans, specifications and other development plans are subject to change and will not necessarily accurately reflect the final plans and specifications for the development.

RESIDENCE
13
LEVEL 2-7

2 Bedrooms
2.5 Bathrooms

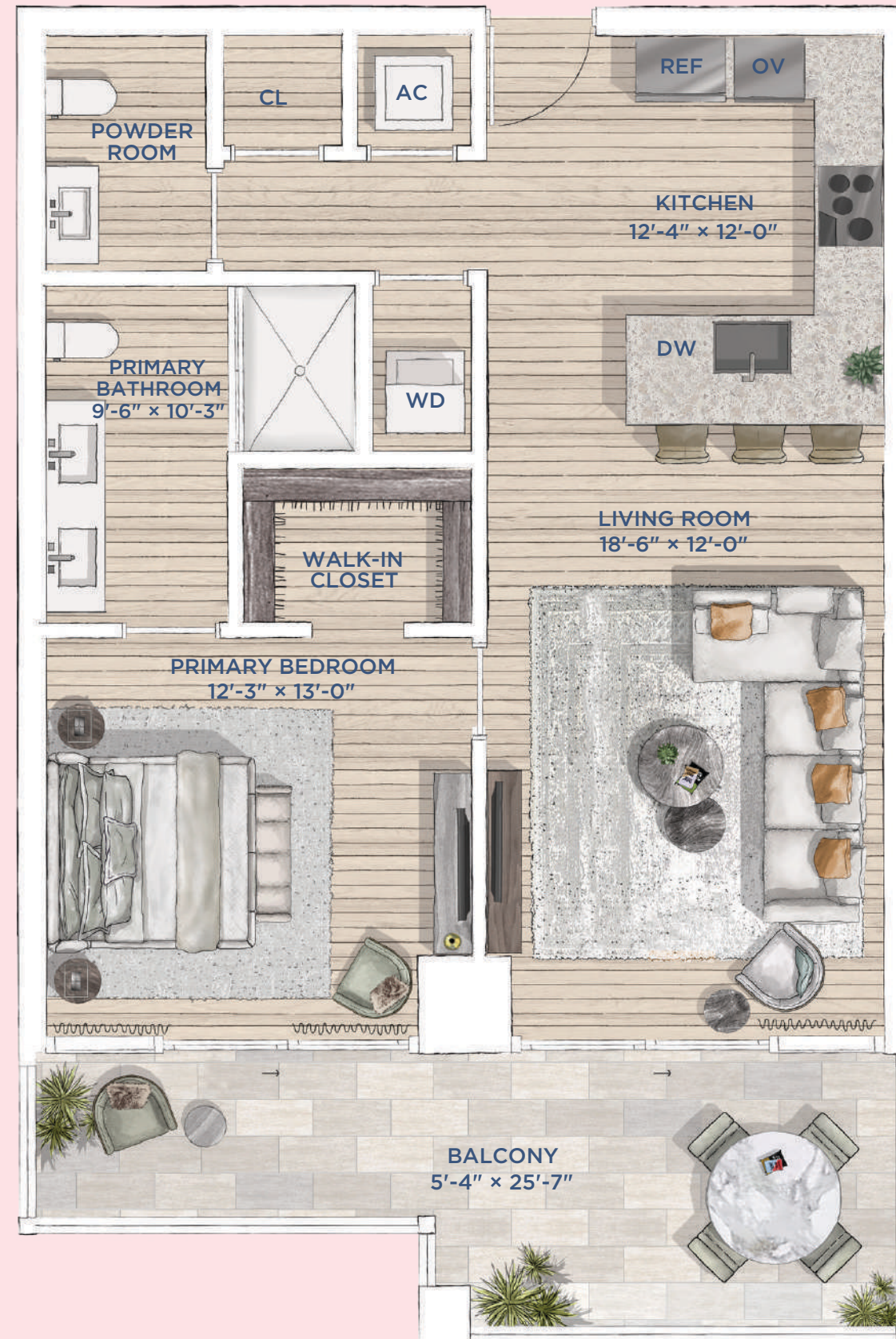
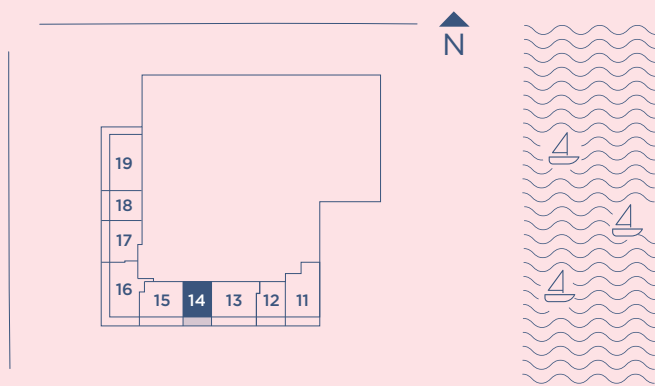
INTERIOR: 1201 SQ. FT. 112 SQ. M.
BALCONY: 338 SQ. FT. 31 SQ. M.
TOTAL: 1539 SQ. FT. 143 SQ. M.



RESIDENCE
14
LEVEL 2-7

1 Bedroom
1.5 Bathrooms

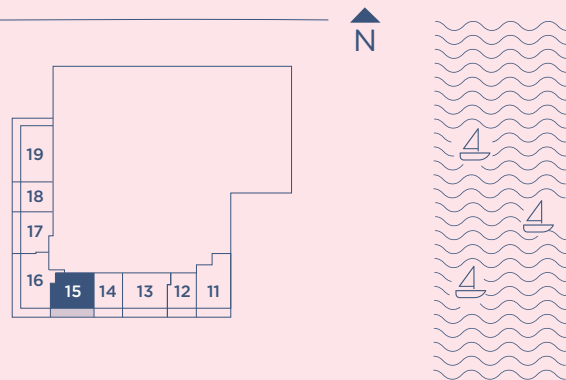
INTERIOR: 830 SQ. FT. 77 SQ. M.
BALCONY: 156 SQ. FT. 15 SQ. M.
TOTAL : 986 SQ. FT. 92 SQ. M.



RESIDENCE
15
 LEVEL 3-7

2 Bedrooms
2.5 Bathrooms

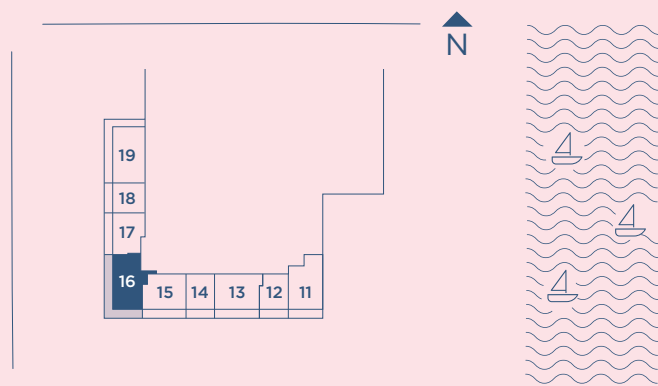
INTERIOR: 1166 SQ. FT. 108 SQ. M.
 BALCONY: 234 SQ. FT. 22 SQ. M.
 TOTAL: 1400 SQ. FT. 130 SQ. M.



RESIDENCE
16
LEVEL 3-7

2 Bedrooms
2.5 Bathrooms

INTERIOR: 1510 SQ. FT. 140 SQ. M.
BALCONY: 483 SQ. FT. 45 SQ. M.
TOTAL: 1993 SQ. FT. 185 SQ. M.

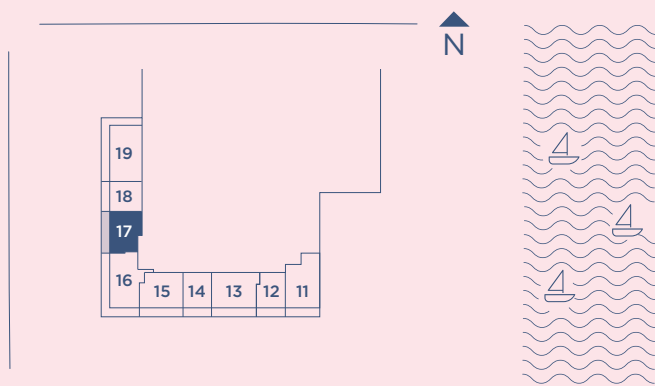


Stated square footages and dimensions are measured to the exterior boundaries of the exterior walls and the centerline of interior demising walls and in fact vary from the square footage and dimensions that would be determined by using the description and definition of the "Unit" set forth in the Declaration (which generally only includes the interior airspace between the perimeter walls and excludes all interior structural components and other common elements). This method is generally used in sales materials and is provided to allow a prospective buyer to compare the Units with units in other condominium projects that utilize the same method. Measurements of rooms set forth on this floor plan are generally taken at the farthest points of each given room (as if the room were a perfect rectangle), without regard for any cutouts or variations. Accordingly, the area of the actual room will typically be smaller than the product obtained by multiplying the stated length and width. All dimensions are estimates which will vary with actual construction, and all floor plans, specifications and other development plans are subject to change and will not necessarily accurately reflect the final plans and specifications for the development.

RESIDENCE
17
LEVEL 3-7

1 Bedrooms
1.5 Bathrooms

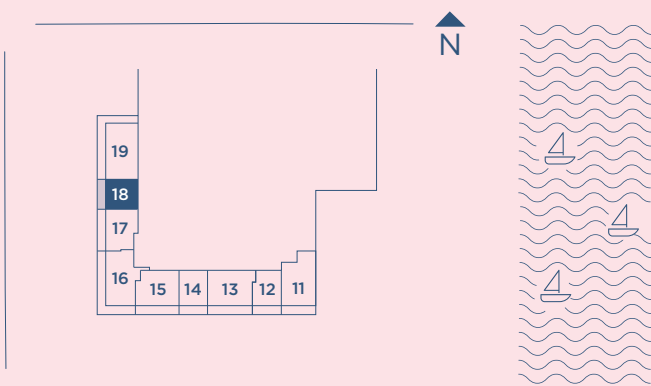
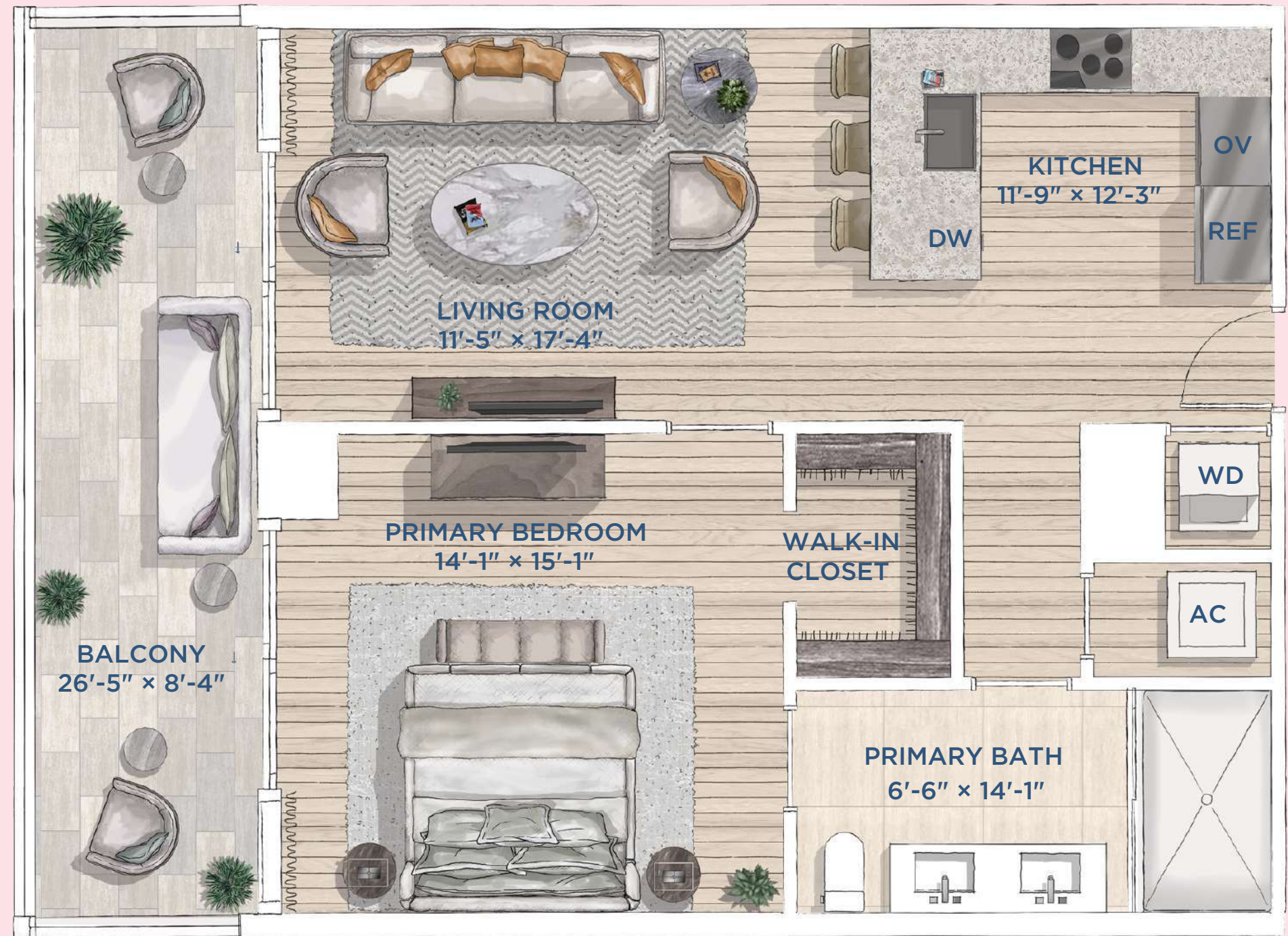
INTERIOR: 996 SQ. FT. 93 SQ. M.
BALCONY: 258 SQ. FT. 24 SQ. M.
TOTAL: 1254 SQ. FT. 117 SQ. M.



RESIDENCE
18
 LEVEL 2-7

1 Bedroom
1 Bathroom

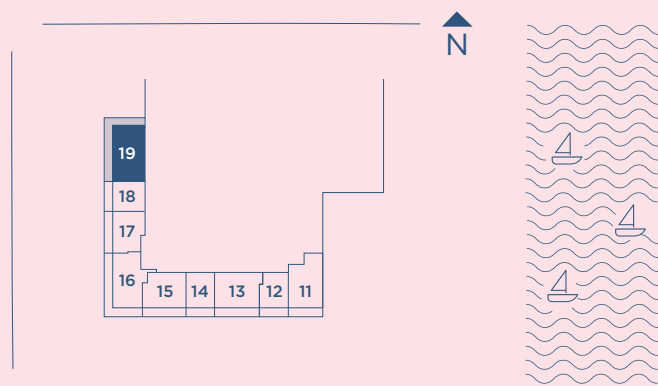
INTERIOR: 824 SQ. FT. 77 SQ. M.
 BALCONY: 242 SQ. FT. 22 SQ. M.
 TOTAL: 1066 SQ. FT. 99 SQ. M.



RESIDENCE
19
 LEVEL 2-7

2 Bedrooms
2.5 Bathrooms

INTERIOR: 1528 SQ. FT. 142 SQ. M.
 BALCONY: 669 SQ. FT. 62 SQ. M.
 TOTAL: 2197 SQ. FT. 204 SQ. M.



Stated square footages and dimensions are measured to the exterior boundaries of the exterior walls and the centerline of interior demising walls and in fact vary from the square footage and dimensions that would be determined by using the description and definition of the "Unit" set forth in the Declaration (which generally only includes the interior airspace between the perimeter walls and excludes all interior structural components and other common elements). This method is generally used in sales materials and is provided to allow a prospective buyer to compare the Units with units in other condominium projects that utilize the same method. Measurements of rooms set forth on this floor plan are generally taken at the farthest points of each given room (as if the room were a perfect rectangle), without regard for any cutouts or variations. Accordingly, the area of the actual room will typically be smaller than the product obtained by multiplying the stated length and width. All dimensions are estimates which will vary with actual construction, and all floor plans, specifications and other development plans are subject to change and will not necessarily accurately reflect the final plans and specifications for the development.